

Maestro Opus Pedicure Chair



© Copyright 2020
Continuum®

All rights reserved. This document or any portion thereof may not be reproduced in any way, including photocopying or translation to another language without the prior written permission from Continuum.

Continuum® is a registered trademark of Earthlite, LLC,

Legal Notice

The information provided in this document is intended for informational purposes only and is subject to change without notice. The information provided in this document should not be construed as a commitment by Continuum®.

Continuum® assumes no responsibility for the accuracy or suitability of the information contained in this document. This document may contain technical inaccuracies or errors. Continuum® makes no expressed or implied warranties of any kind concerning the information contained in this document, including, but not limited to, the implied warranties of merchantability and fitness for purpose.

Continuum® shall not be liable for incidental or consequential damages in connection with or arising out of the product, performance, or use of this document and the information and material it describes.

Introduction

Congratulations on your purchase of the Maestro Opus pedicure chair. The Maestro Opus has a distinctive design and bold lines set the standard for high-end, luxury pedicure chairs. The Maestro Opus is packed with features that are sure to satisfy the most discerning clients, such as dual seat controls, hand cut and sewn upholstery, solid surface basin, and Relaxor heat and massage system.

The Maestro Opus is designed for licensed therapists and technicians and is intended to be used in a professional spa, salon, or similar commercial environment. While no special training is needed to operate the product, for safety reasons it is important that the instructions contained in this manual are reviewed in detail before the first use. This manual should be read in its entirety by each professional who will be operating the product to ensure the safety of both operator and client. This manual should be saved for future reference.

The Maestro Opus should not be used in any other manner than described in this manual. Please read, understand, and follow all safety warnings, labels, and instructions. Misuse, use of unnecessary force, or using the chair for unintended or unauthorized procedures can result in injury to operator, client, and/or equipment.

Detailed instructions for use and maintenance can be found in this user manual. If you have further questions, please contact us at (877) 255-3030 for US customers, or (760) 597-5707 for international customers. We can also be reached via e-mail at orders@continuumpedicure.com.

Table of Contents

Section 1: Safety Information

Safety Symbols/Warnings	2-3
-------------------------------	-----

Section 2: Product Overview

Product Diagram	4
Product Specifications	5

Section 3: Operating Instructions

Leveling Your Chair	6
Filling the Tub	6
Gravity Drain & Drain Pump	7
Jet System	7
Technician Controls	8
Chair Swivel	8
Electrical Specifications	8
Client Controls	9

Section 4: Care & Maintenance

Cleaning & Ongoing Maintenance	10
Tub Cleaning Guide	11
Troubleshooting	12
Warranty Information	13
Contact Us	back cover

SECTION 1: SAFETY INFORMATION

Safety Symbols

Familiarize yourself with the following Safety & Warning symbols. They are designed to prevent damage and injury to you, your clients, and your new Continuum product.

IMPORTANT: The important safety instructions and warnings in this manual cannot cover all possible problems and conditions that can occur. Use common sense and caution when installing, operating, or maintaining this appliance.



Indicates an imminently hazardous situation which could result in serious or fatal injury.



Indicates a potentially hazardous situation which could result in serious injury.



Indicates a potentially hazardous situation which could result in equipment damage and/or injury.

IMPORTANT SAFETY INSTRUCTIONS - FOR COMMERCIAL USE ONLY

Read all instructions before using this product.



RISK OF ACCIDENTAL INJURY OR DROWNING. DO NOT USE DRUGS OR ALCOHOL BEFORE OR DURING USE. CHILDREN OR HANDICAPPED PERSONS SHOULD NOT USE WITHOUT SUPERVISION.

WARNING - RISK OF HYPERTHERMIA AND POSSIBLE DROWNING. WATER TEMPERATURE IN EXCESS OF 38°C or 100.4°F CAN BE INJURIOUS TO YOUR HEALTH. CHECK AND ADJUST WATER TEMPERATURE BEFORE USE.

Hyperthermia occurs when the internal temperature of the body reaches a level several degrees above the body temperature of 98.6°F or 37°C. The symptoms of hyperthermia include an increase in the internal temperature of the body, dizziness, lethargy, drowsiness, and fainting. The effects of hyperthermia include:

- Failure to perceive heat,
- Failure to recognize the need to exit the hydromassage bathtub,
- Unawareness of impending hazard,
- Fetal damage in pregnant women,
- Physical inability to exit the hydromassage bathtub, and
- Unconsciousness resulting in the danger of drowning. **WARNING** - The use of alcohol, drugs, or medication can greatly increase the risk of fatal hyperthermia.

WARNING - RISK OF ELECTRIC SHOCK - Do not permit electric appliances (such as hair dryers, lamp, telephone, radio, or television) to be within 5 ft (1.5m) of this unit.

WARNING - RISK OF INJURY - Exercise care when using a foot bath. Use this product for its intended purpose: a manicure chair and fill and drain indoor commercial appliance for foot and ankle hydro massage. **DO NOT** use attachments not recommended by manufacturer.

WARNING - MOVABLE PARTS, RISK OF INJURY:

- Keep children away from adjustable seat armrests, tilt back, and seat slide, and footrest.

WARNING - To reduce the risk of burns, fire, electric shock, or injury to persons:

- Unplug from outlet before putting on or taking off parts.
- Close supervision is necessary when this furnishing is used by, or near children, invalids, or disabled persons. **DO NOT** leave children alone or allow them to operate the controls. Keep controls out of reach of children. **DO NOT** allow children to crawl behind the chair.
- Never use this furnishing if it has a damaged cord or plug, if it is not working properly, if it has been dropped or damaged, or dropped into water. Return the furnishing to a service center for examination and repair.
- Keep the cord away from heated surfaces.
- Never operate the furnishing with the air openings blocked. Keep the air openings free of lint, hair, etc.
- Never drop or insert any object into any opening.

SECTION 1: SAFETY INFORMATION

WARNING

- DO NOT reach for any electrical object that has fallen into the water. Unplug immediately.
- DO NOT drop or insert anything into jet opening.
- DO NOT operate without the complete jet assembly installed or without water filled 1 inch above jets.
- DO NOT overfill the basin.
- DO NOT stand on or in the basin, or on the foot rest.
- DO NOT leave this appliance unattended when in operation.
- DO NOT use outdoors.
- DO NOT swivel when chair is in tilt position.
- Keep the electrical cord away from heated surfaces.
- Connect this appliance only to a properly grounded outlet.
- To avoid injury, exercise care when entering or exiting the chair and foot bath.
- Use caution when making positioning adjustments to your chair. Keep all equipment and body parts away from moving parts while making any adjustments.
- It is important that you clean and disinfect the jets and basin after every use.
- Hydrotherapy should be pleasant and comfortable. Should you or a client experience any pain or discomfort while using the foot bath, discontinue use immediately and consult a physician.
- You or your clients should consult a physician if diabetic, have poor circulation, if feet or legs are inflamed, have an open wound, or if you have questions about whether you should be using hydro massage equipment.
- A licensed plumber and electrician are strongly recommended to install your foot bath.
- Make certain that the cord and plug are maintained in good condition and are not allowed to become damaged while in use. Avoid positioning the cord in the traffic lane and it is always kept out of the way. Take this furnishing out of service immediately if the cord or plug becomes damaged in any way.
- Do not attempt to repair. All repairs must be performed by an authorized service representative.



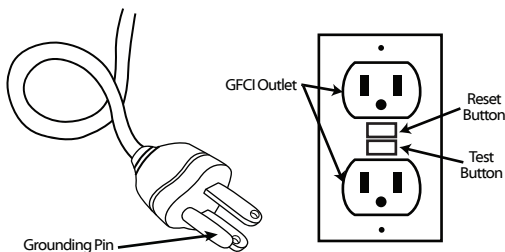
INSTALLATION INSTRUCTIONS / GROUNDING INSTRUCTIONS

1. RISK OF ELECTRIC SHOCK. Connect only to a circuit protected by a ground-fault circuit-interrupter (GFCI).

2. Grounding is required. The unit must be installed by a licensed electrician and grounded.

This product must be grounded. If it should malfunction or break down, grounding provides a path of least resistance for electric current to reduce the risk of electric shock. This product is equipped with a cord having an equipment-grounding conductor and grounding plug. The plug must be plugged into an appropriate outlet that is properly installed and grounded in accordance with all local codes and ordinances.

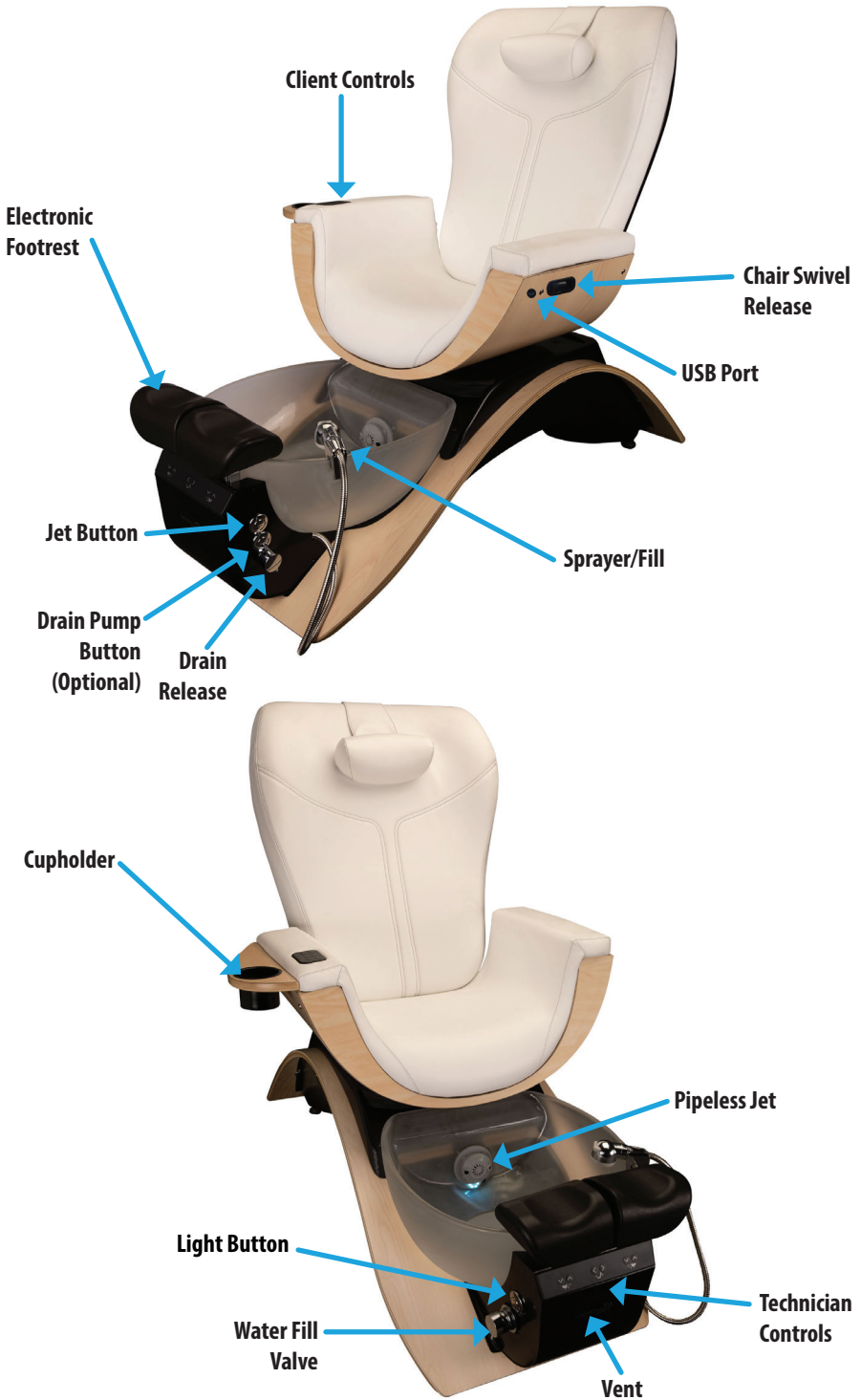
Improper connection of the equipment-grounding connector can result in a risk of electric shock. Check with a qualified electrician or serviceman if you are in doubt as to whether the product is properly grounded. Do not modify the plug provided with the product - if it will not fit the outlet, have a proper outlet installed by a qualified electrician.



IMPORTANT: See separate installation instructions for detailed installation information.

READ AND SAVE THESE INSTRUCTIONS

SECTION 2: PRODUCT OVERVIEW



SECTION 2: PRODUCT OVERVIEW

Product Specifications

Length	61.25" (156 cm)
Width	36" (92 cm) 44.75" (113 cm), with side trays
Overall Height	52" (132 cm)
Seat Height	23.5" (60 cm)
Weight Capacity	300 lbs
Basin Capacity	5.7 gallons

**Measurements may vary due to natural material variations.*

Included Features

Feature	Standard	Optional
Power chair positioning/recline	X	
Pipeless magnetic jet system	X	
Glass Basin	X	
Swivel seat	X	
Relaxor Heat & Massage	X	
Dual client/tech seat controls	X	
Cupholder	X	
Integrated Ventilation	X	
USB Port	X	
Drain Pump		X
Manicure trays		X
Full concealment side panels		X
Upholstery	Premium Ultraleather	Custom upholstery

SECTION 3: OPERATING INSTRUCTIONS

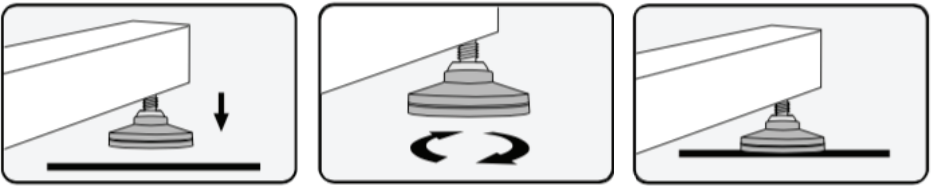
Leveling Your Chair

Leveling, or balancing, your chair is very important during initial setup and routine maintenance. Your Maestro Opus is equipped with six (6) leveling feet.

NOTE: Leveling feet have been adjusted prior to shipment - in most cases no further adjustment should be necessary. The entire pedicure chair may be raised or lowered slightly to ensure the technician's chair touches the front stainless steel guard and not the wood or Formica®

To adjust the leveler feet:

1. Place the chair in the position you plan to use it.
2. To determine which foot needs adjusting, attempt to "rock" the chair. If there is any movement, the leg that is lifting is the one that will need adjusting.
3. Using your hand, or a wrench if necessary, turn the leveling foot in the needed direction. (Counterclockwise will lower the overall height, clockwise will raise the overall height)



Filling the Tub

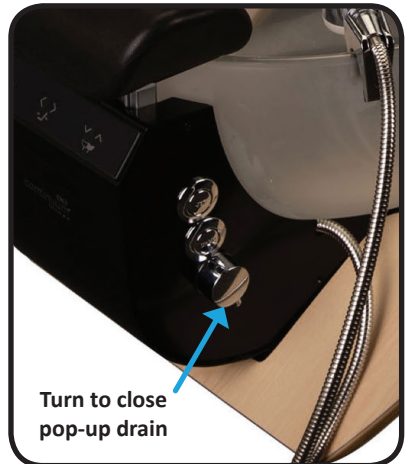
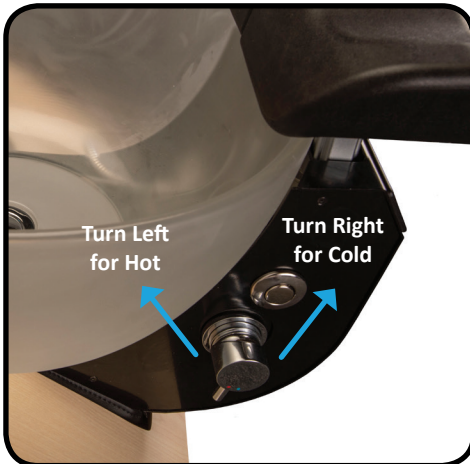
Locate the chrome hot/cold water valve handle on the front of your pedicure chair. This valve handle controls both the flow of water and the temperature of water. Note: The sprayer/filler has a dual function; it is both a sprayer and filler for the basin.

When desired water temperature is achieved, close "Pop-Up" in bottom of basin by turning chrome drain handle located on right side of the base. (Figure 2)

When water level reaches a point approximately one (1) inch ABOVE the top edge of the jet (or the fill line indicated by a sticker in the basin), shut water off by pressing down on the handle.



There is no automatic shutoff with the water fill valve. You **MUST** turn the valve OFF after the tub is filled to prevent overflow and/or flooding. Do not walk away from the tub when it is filling with water.



SECTION 3: OPERATING INSTRUCTIONS

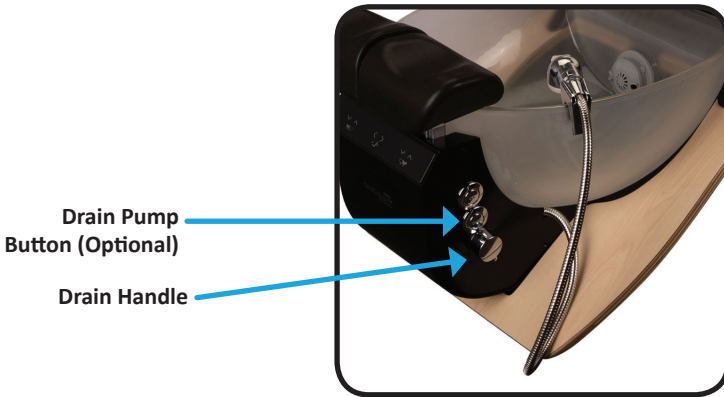
Draining the Tub

1. Gently turn drain handle located on right side of base. This activates “Pop-Up” located on bottom of basin allowing water to drain.
2. Wait for the air bubbles to exit. Press chrome button marked “DRAIN” to activate pump.
3. When basin is fully emptied, press button again to turn the pump off.

NOTE: Drain pump will automatically turn off in four (4) minutes if button is not pressed a second time

CAUTION

ALWAYS perform Step 1 before Step 2. Never reverse the steps as this may cause the “Pop-Up” to become jammed in the waste assembly.



Jet System

The pipeless “magnetic” system is standard in your pedicure unit. After basin is filled to proper level, turn jet on by pressing the chrome button marked “JET”. To turn off, press “JET” button a second time.

NOTE: Liners can be used on a “magnetic” system. The liner has to sit between the motor housing and the wet end assembly.

CAUTION

The jet assembly must be correctly assembled or it may be damaged. This will NOT be covered by any Continuum warranty. Never turn the jet on without adequate water in the basin. There must be at least one (1) inch of water above the motor housing.



SECTION 3: OPERATING INSTRUCTIONS

Technician Controls

See below for technician controls functionality.

WARNING

Always use extreme caution when making any position adjustments to the chair. Ensure all body parts and objects are clear from all moving parts.



Raise/lower
right footrest

Slide seat
forward/backward

Raise/lower
left footrest

Chair Swivel

WARNING

Make sure each client moves slowly and carefully. ONLY enter and exit chair when it is in a locked position.

The Chair Release Lever is on the left side of the chair. Gently lift up on the lever allowing the chair to swivel. This must be done each and every time a client enters or exits the chair.

Please note: In order for the chair locking mechanism to work properly, one must sit normally in the chair, that is to say, NOT on the outer edge of the chair, but rather sitting back in the chair. This allows for the locking pin to engage and disengage easily.

When entering: Lift lever allowing chair to swivel either left or right. With client seated, swivel chair to front position until a click is heard. This safely locks the chair in place.

When exiting: Lift lever allowing chair to swivel either left or right until a click is heard. This safely locks the chair allowing exit.

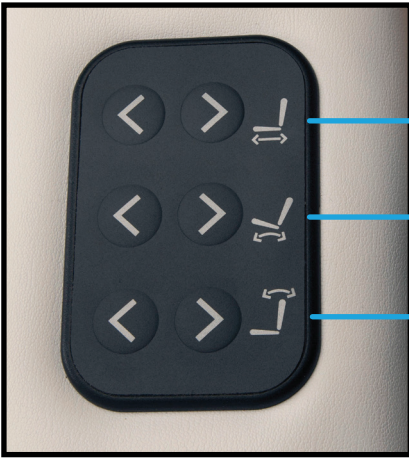
Electrical Specifications

Spec	North America	Europe/Asia
Input Voltage	120 VAC	220 VAC
Input Frequency	60 Hz	50 Hz
Total Consumption - Standard Features	9A	4.5A

SECTION 3: OPERATING INSTRUCTIONS

Embedded Client Control

The following photo shows the functionality of the Maestro Opus embedded control.



Slide seat forward/backward

Seat base tilt increase/decrease

Seat back tilt increase/decrease

Relaxor Heat & Massage Hand Control



RISK OF ELECTRIC SHOCK

Keep hand control and all electrical components away from water.



SECTION 4: CARE & MAINTENANCE

Cleaning & Ongoing Maintenance

The following procedures are important guidelines that will help in keep your Maestro Opus clean and trouble free for years. It is extremely important to clean and disinfect every pedicure chair after each pedicure and after the last pedicure of the day. (See next page for instructions.)

YOU ARE REQUIRED TO CHECK WITH YOUR STATE BOARD FOR MANDATORY CLEANING AND DISINFECTING REQUIREMENTS AND PROCEDURES.



DO NOT USE acetone, paint thinner, bleach, "Armor All" type cleaners, or industrial cleaners for ANY part of your chair, tub, or components.

DO NOT place nail care products on the tub.

Extended exposure to chemicals like bleach can damage the basin, footpad, and/or upholstery. Failure to comply with all cleaning instructions can cause damage and void your warranty.

Category	Care/Maintenance Recommendation
Formica Finishes	Formica finishes require very little maintenance. Wipe dry any water that may splash onto the Formica.
Glass Basin	DO NOT use abrasive pads or cleaner on any part of the glass basin. Wipe clean with a sponge or soft brush. Follow State's cleaning and disinfecting procedures.
Most Dirt & Residue	Use soapy water, ammonia based cleaner, (not window cleaner) rinse and wipe completely dry. Commercially available solid surface cleaners, such as Clean Encounters will also work well.
Prevent Hard Water Marks	Rinse and wipe completely dry after cleaning.
Remove Hard Water Marks	Use cleaner formulated for removing hard water marks, such as CLR or Lime-A-Way.
Stubborn Dirt, Stains, or surface imperfections	Occasionally stains will not be removed by the above steps, in this case the use of a Mr. Clean® Magic Eraser will allow for a more aggressive cleaning without damaging the surface finish. Use the Magic Eraser following the directions on the package.
Upholstery	Simply use a mild detergent (very little) with warm water and gently clean any dirt or grime that may appear on the seat, seat back or arms.
Footrests	A mild detergent and warm water is all that is needed to clean the padded footrests. However care should be taken to prevent nail polish or acetone from coming in contact with the footrests. These products may damage or discolor the outer "skin" of the foam. In spite of taking necessary precautions to protect the footrests, hard water and/or certain products may cause the black footrests to develop a white film or some discoloration. If this occurs, a product called "Black Max"- Vinyl and Rubber Dressing works well to restore the footrests. NOTE: DO NOT USE THE NYLON SCOURING PAD ON THE FOOTRESTS.

SECTION 4: CARE & MAINTENANCE

Tub Cleaning Guide



YOU ARE REQUIRED TO CHECK WITH YOUR STATE BOARD FOR MANDATORY CLEANING AND DISINFECTING REQUIREMENTS AND PROCEDURES

The removable wet-end assembly **MUST** be placed onto the motor housing in the correct position of the jet may be damaged. The wet end housing must fit in the proper groove onto the motor housing. If the wet end is not positioned correctly, damage to the jet may occur due to misalignment. This will **NOT** be covered by any Continuum warranty. Never turn the jet on without adequate water in the basin. There must be at least one (1) inch of water above the motor housing.

Recommended Cleaning and Disinfecting Products

Your state board requires disinfecting of your pedicure basin. Continuum recommends "Splish Splash One-Step Disinfectant." While other EPA registered products are available for maintaining pedicure tubs, we have found Splish Splash to be the most effective, multi-purpose and economical product on the market.

Cleaning After Each Client & End of Day

1. Turn off the jet and drain all water from the basin.
2. After the motor has completely stopped, twist the cover from the housing to expose the impeller.
3. Remove the wet end consisting of the cover, impeller, and housing from the jet.
4. Clean all 3 wet end parts with a brush, liquid soap, and water to remove all visible residue. Reattach all 3 parts to the motor housing, ensuring the wet end is placed in the proper groove on the jet housing.
5. Fill basin with warm water and add the correct amount of an EPA-registered liquid disinfectant (Splish Splash strongly recommended). Turn on the jets to circulate the water for at least 10 minutes, scrubbing all visible residue from the inside walls of the basin with a sponge/soft brush. **NOTE:** Brushes must be cleaned/disinfected after each use.
6. Drain the basin, rinse with fresh water, and wipe dry with a clean paper towel.

NOTE: THE ABOVE SHOULD BE FOLLOWED EVEN IF TUB LINERS ARE USED

The use of oil-based products can build up in the whirlpool system causing clogging in the jet and build up onto the surface of the basin. Adherence to the above cleaning will minimize build up but the manufacturer recommends not to use mineral oil based products.

Cleaning Every Other Week

1. Fill tub with water and one-third (1/3) cup of 5.25% chlorine bleach for each one (1) gallon of water. (An alternative to bleach would be an EPA-registered disinfectant with demonstrated bactericidal, fungicidal, and virucidal activity.)
2. Turn on the jets to circulate the solution for 5-10 minutes and then sit for 6-10 hours.
3. Drain the basin, rinse well with fresh water, and wipe dry with a clean paper towel.

SECTION 4: CARE & MAINTENANCE

Troubleshooting

This helpful troubleshooting guide will provide you with information about how to recognize a problem with your product, determine possible causes, and find a solution.

In the event your specific situation is not covered in this guide, please contact Continuum so our technical support department can assist you. Beyond the troubleshooting guide below, do not attempt to repair the issue yourself. This can void your warranty.

Unauthorized service will not be covered. Please be sure to contact Continuum Customer Service first at (877) 255-3030, (760) 597-5707 Int'l.

Issue	Solution
No Power/Not Operating	<ol style="list-style-type: none">1. Ensure the power cord is properly plugged into an operational GFCI power supply/outlet.2. Check GFCI reset and circuit breakers or fuses.3. Ensure the outlet in your room is receiving power. This can be done by plugging in a small appliance and turning it on.
No Power to Jet/ Jet not Operating	<ol style="list-style-type: none">1. Ensure the power cord is properly plugged into an operational GFCI power supply/outlet.2. Check GFCI reset and circuit breakers or fuses.3. Ensure impeller is correctly installed in the case.4. Reset the motors by unplugging the system, waiting 5 seconds, then plugging in again.
Excessive Noise from Jets	<ol style="list-style-type: none">1. Remove jet assembly and inspect for dirt buildup, debris, or damage.2. Follow cleaning instructions or <u>replace</u> if necessary.
Water Leakage	<ol style="list-style-type: none">1. Check and ensure all visible bolts are tightened.2. Call a plumber to determine the source of the leak.3. If the leak is from the jet system, contact customer service.

SECTION 4: CARE & MAINTENANCE

Warranty Information

Continuum Footspas has designed and manufactured their pedicure chairs to the highest standards. Accordingly, Continuum Footspas offers an industry best warranty as follows:

- Motors and controls, actuators, foam and upholstery are warranted for two (2) years, including parts and labor unless otherwise noted.
- Glass parts are warranted for one (1) year.
- Accessories and replacement parts are warranted for ninety (90) days from date of shipment.

Continuum may repair or replace defective components at our discretion. Continuum will return the warranted product, standard shipping pre- paid, to customers in the continental US. International customers are responsible for any applicable duties and taxes, as well as all shipping charges inbound and outbound.

Excluded from Limited Warranty:

1. Unauthorized repairs.
2. Damage due to freight, accident, natural disaster, and/or abuse.
3. Damage or malfunctions due to improper installation including but not limited to, failure to comply with all national, state, and local plumbing, electrical, and building codes.
4. Fading, discoloration, or staining of any part due to improper water additives, hard water, or harmful cleaning agents or chemicals.
5. Damage to drain pump due to obstruction in drain hose and/or debris in pump impeller housing.

Parts and/or circumstances for which labor is NOT COVERED - Parts noted below are simple to replace and DO NOT require a service technician:

- Jet cover and/or impeller
- Footrest/leg supports
- On/off air actuated button
- Pedicute model
- Black plastic parts
- Manicure trays
- Replacement upholstery
- Faucet cartridge and/or filler-sprayer
- Roller massage or Relaxor heat + massage system
- Any LED light
- Handheld control wands
- Any international shipment including but not limited to Canada and Mexico

All warranties are limited to repair or replacement, at Continuum's discretion, unless otherwise stated. This limited warranty applies only to pedicure chairs installed in any one of the fifty (50) States of the United States, the District of Columbia, or provinces of Canada.



Contact Us

Continuum
990 Joshua Way
Vista, CA. 92081
(877) 255-3030
(760) 597-5707 Int'l
orders@continuumpedicure.com

Hours of operation:

Monday - Friday
8:00 a.m. to 5 p.m. PST

Saturday - Sunday
Closed

Visit us online at: mycontinuumpedicure.com



Join us on
Facebook



Follow us on
Twitter



Follow us on
Instagram



Connect with us
on Linked In